

PART OF THE NW 1/4 OF SEC. 23, T.5N., R.1W., S.L.B. & M.
AND A PART OF LOT 39, UINTAH-HIGHLANDS SUB. NO. 3
WILLOW GREENE ESTATES PHASE ONE

367

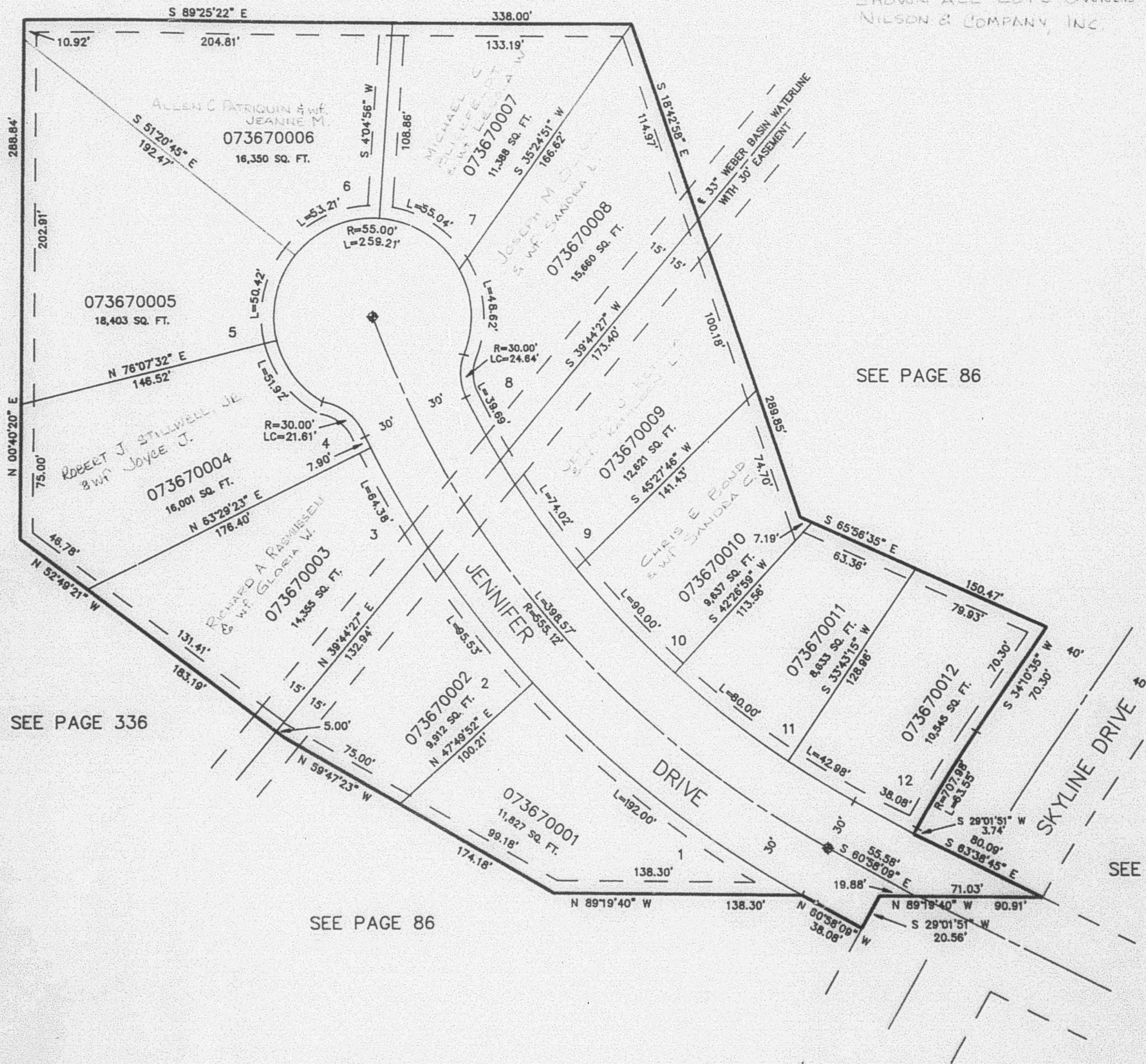
TAXING UNIT: 244

IN WEBER COUNTY
SCALE 1" = 50'

SEE PAGE 86

EXCEPT WHERE OTHERWISE
SHOWN ALL LOTS OWNED BY:
NIELSON & COMPANY, INC.

SEE PAGE 182



SEE PAGE 86

SEE PAGE 336

SEE PAGE 86

SEE PAGE 86

7' UTILITY & DRAINAGE EASEMENTS EACH
SIDE OF PROPERTY LINES AS INDICATED
BY DASHED LINES EXCEPT AS OTHERWISE
SHOWN.

FOR COMPLETE ENG DATA SEE
ORIGINAL DEDICATION PLAT IN
BOOK 31, PAGE 98 OF RECORDS.